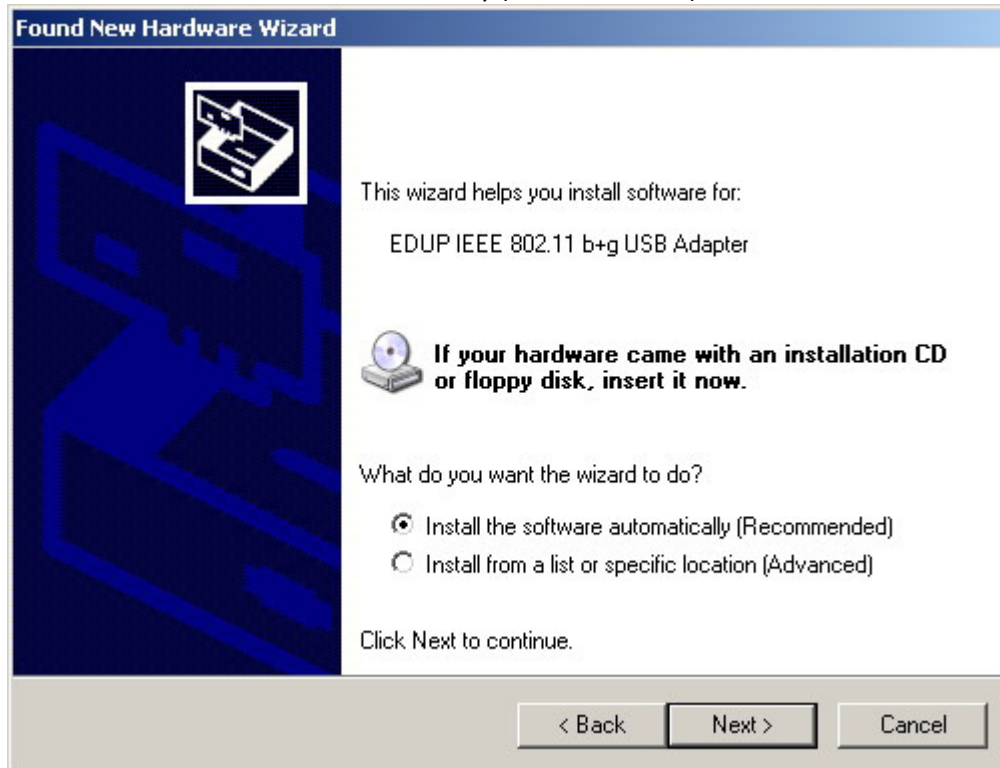


Instruction:

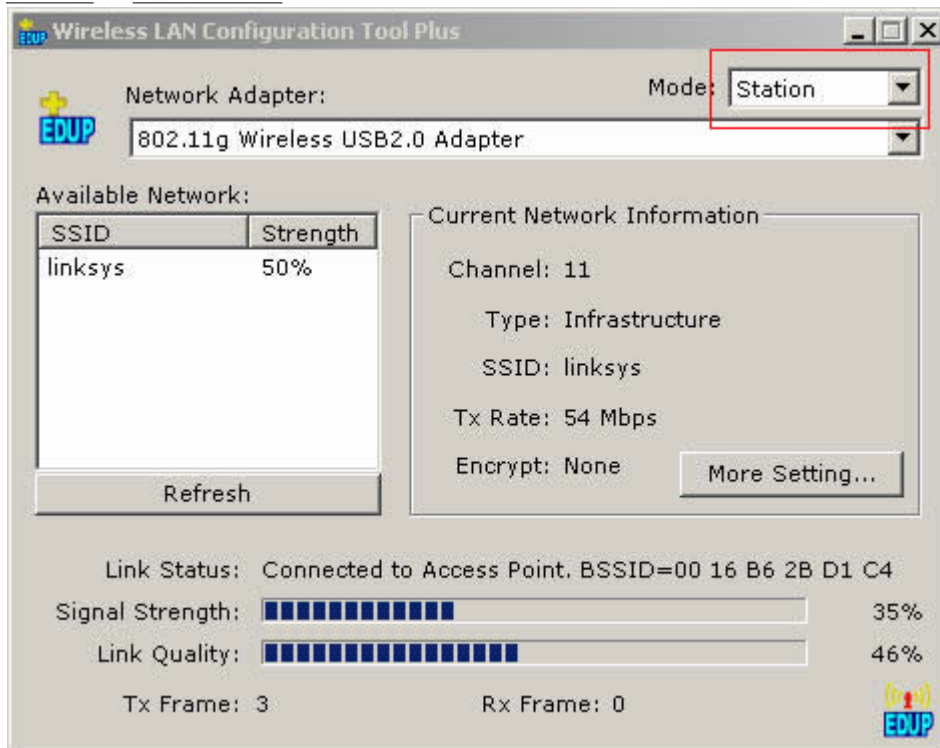
1. Plug in the USB Wireless adapter onto the USB port. "Found new Hardware wizard" will come up, please select "Install the software automatically (Recommended)"



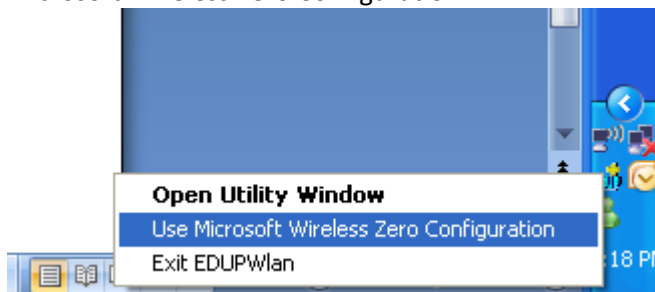
2. After a successful installation, the window will recognize the adapter



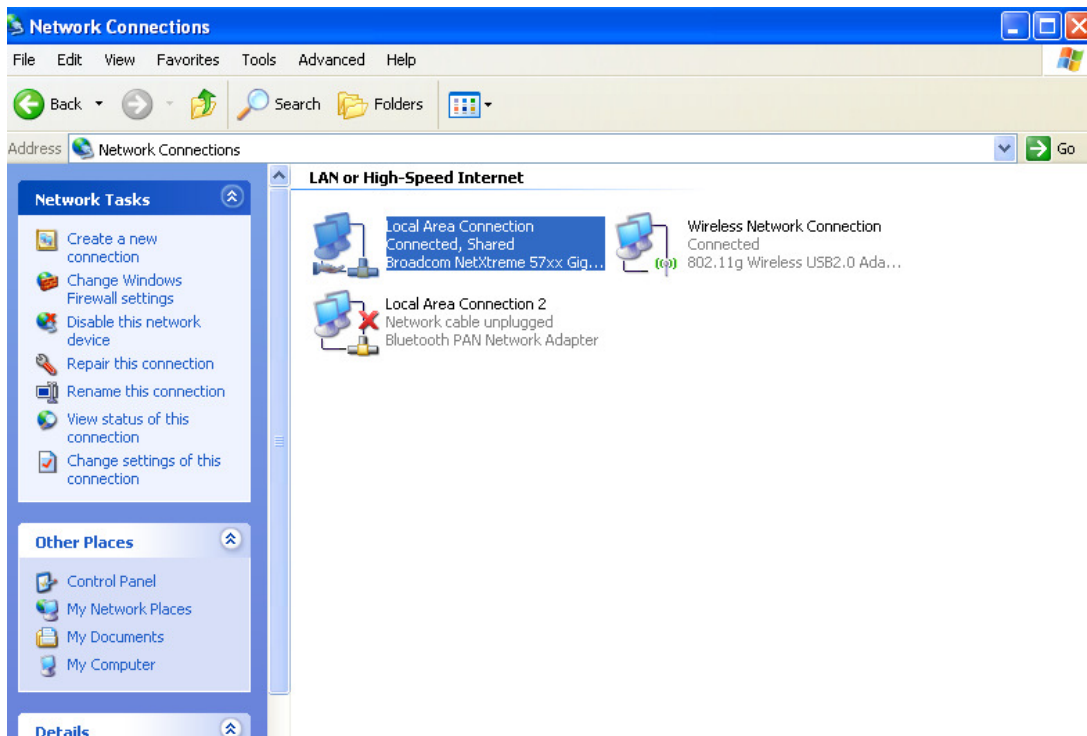
3. Open the EDUP Wireless LAN configuration Tool Plus to choose the function for this wireless adapter:
Station or ***Access Point***



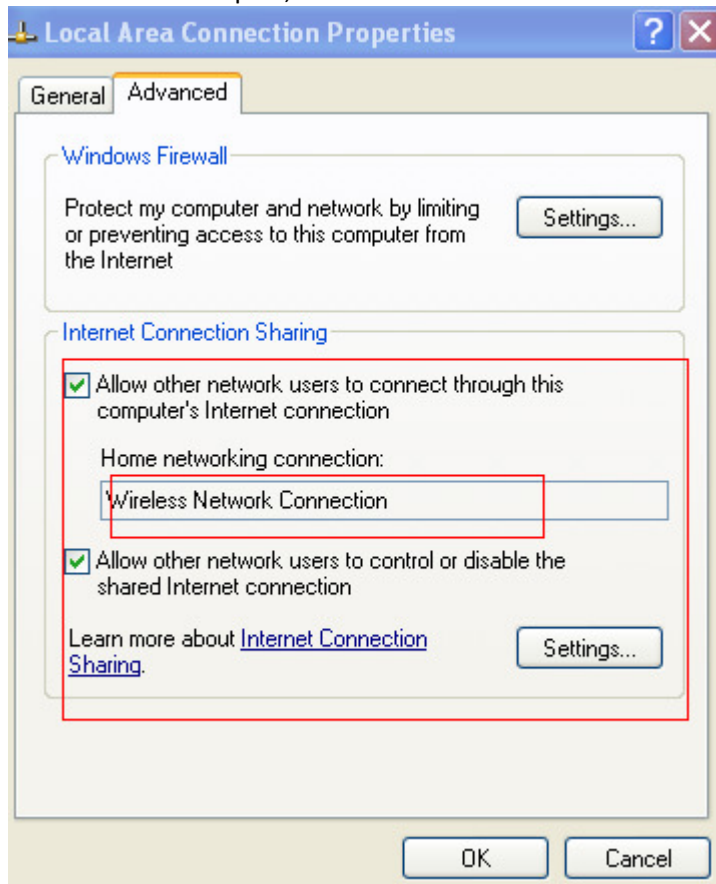
4. To set up this adapter as "***Station***", please right click the EDUP icon on the tool bar and choose "Use Microsoft Wireless Zero Configuration"



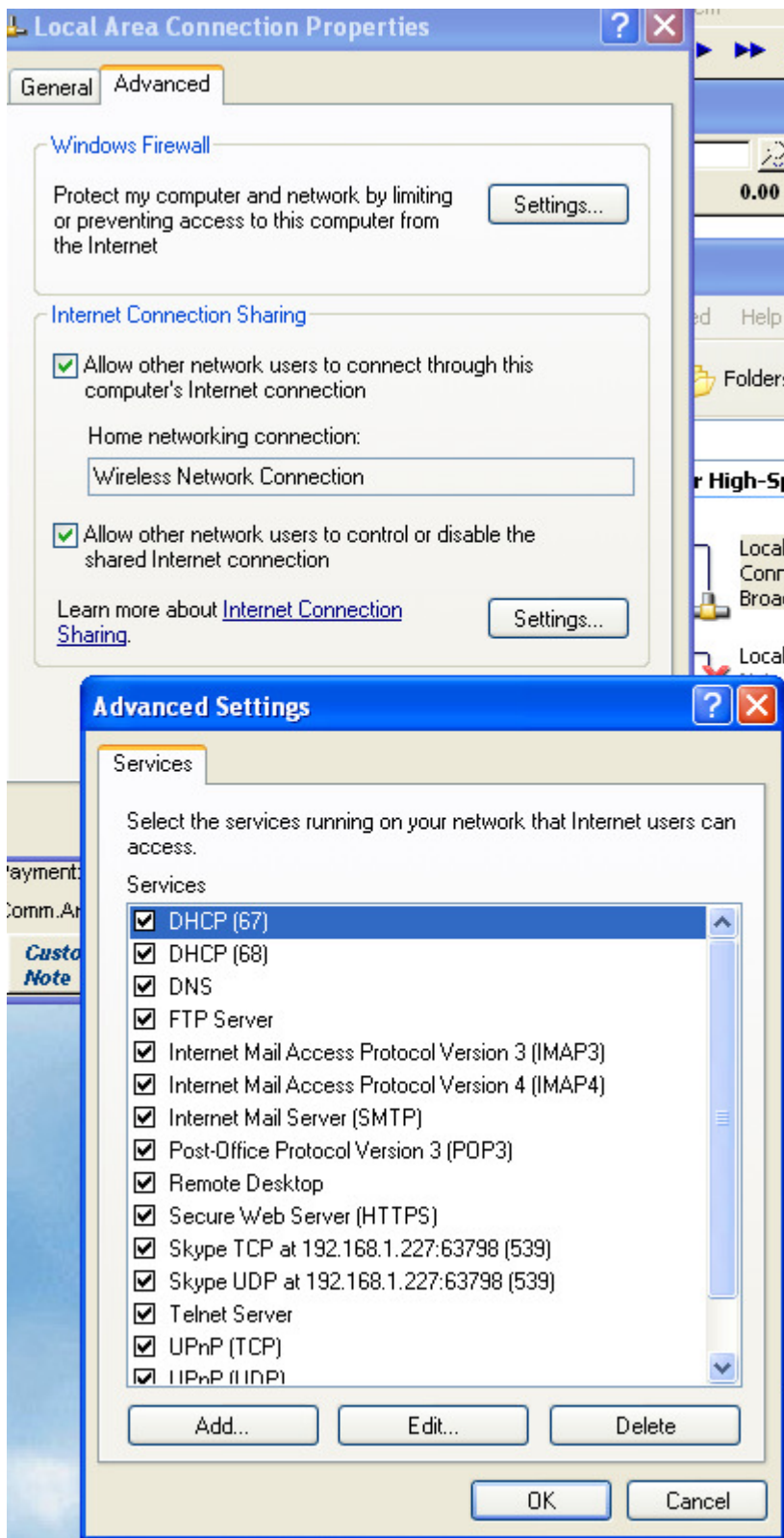
5. To set up this adapter as "***Access Point***", Please resume back to "EDUP Wireless Configuration" by reversing step #5. Open "Window Network Connections" from Windows Control Panel: Select the original source of your internet network



Right Click for “Properties” and Select “Advance” tab, check both box to allow other network user to connect to this adapter; select “Wireless Network Connection”, then click OK



6. Go to “Settings” to check all access services



7. Now you are finished with the installation and set up. Please enjoy the product. Thank you